

valvole a pedale

pedal valves



MINIPEDALE PNEUMATICO

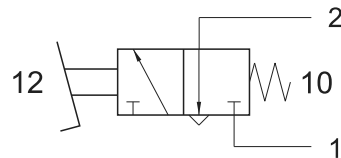
mini-pedal pneumatic valve

pedale monostabile con microvalvola 3/2 NC

mono-stable pedal with microvalve 3/2 NC

CODICE DI ORDINAZIONE
ORDER CODE

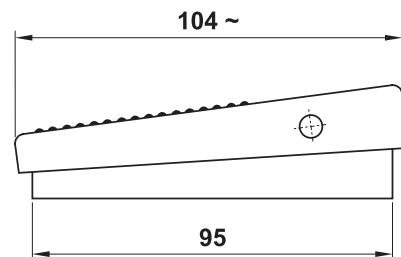
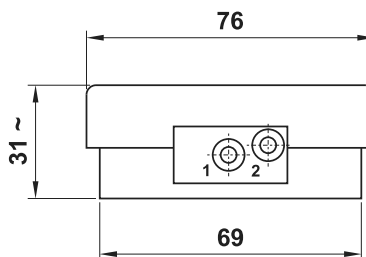
PED 304 M



Involucro: materiale plastico antiurto

Pedal body: shock resistant plastic material

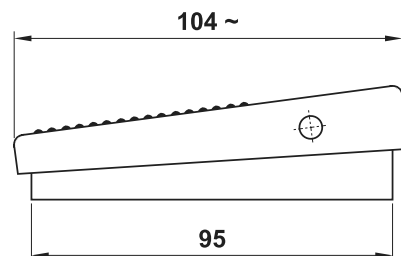
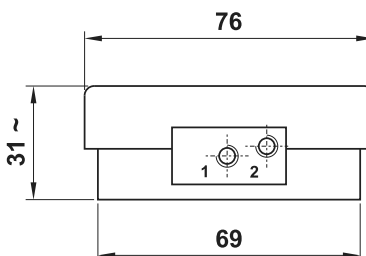
Attacchi <i>Ports</i>	automatici per tubo ø4 <i>ø4 push-in</i>
Portata nominale a 6 bar <i>Nominal flow rate at 6 bar</i>	100 NI/min



CODICE DI ORDINAZIONE
ORDER CODE

PED 305 M

Attacchi <i>Ports</i>	filettati M5 <i>M5 threaded ports</i>
Portata nominale a 6 bar <i>Nominal flow rate at 6 bar</i>	100 NI/min

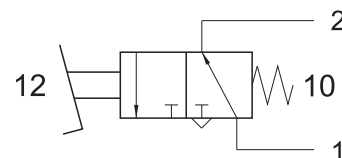


pedale monostabile con microvalvola 3/2 NA

mono-stable pedal with microvalve 3/2 NO

CODICE DI ORDINAZIONE
ORDER CODE

PED 314 M



Involucro: materiale plastico antiurto

Pedal body: shock resistant plastic material

Attacchi <i>Ports</i>	automatici per tubo ø4 <i>ø4 push-in</i>
Portata nominale a 6 bar <i>Nominal flow rate at 6 bar</i>	100 NI/min

