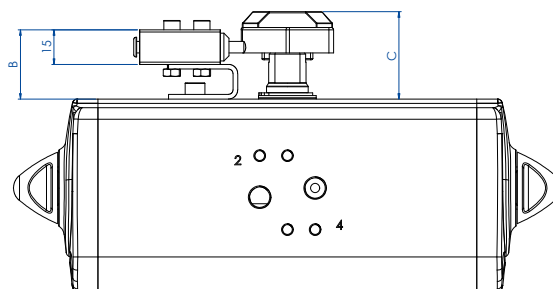
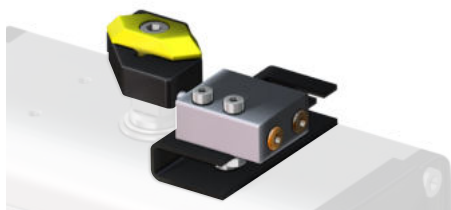




## KFN1 FINECORSА PNEUMATICO KFN1 PNEUMATIC LIMIT SWITCH

### KFN11 - KFN12 KIT + FINECORSА KFN11 - KFN12 KIT + LIMIT SWITCH

Esempio Kit con 1 Finecorsа - Example Kit with 1 Limit Switch



Esempio Kit con 2 Finecorsа - Example Kit with 2 Limit Switch

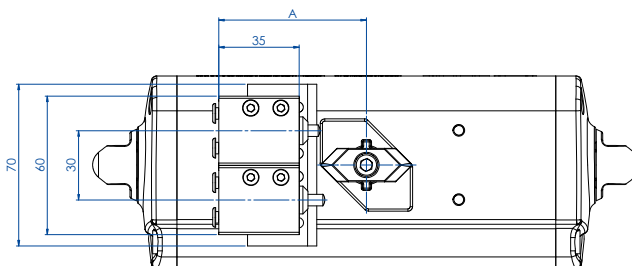
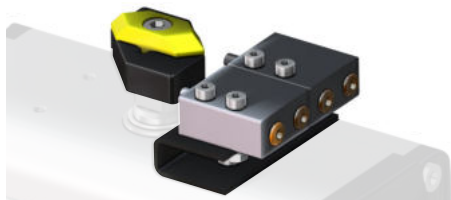


TABELLA CODICI - KIT + FINECORSА CODES TABLE - KIT + LIMIT SWITCHES

Attuatore Actuator	DAN15÷DAN120 SRN15 ÷ SRN60	DAN180÷DAN480 SRN90÷SRN240	DAN720 ÷ DAN1920 SRN360 ÷ SRN960
<b>Codice kit con 1 finecorsа - Code kit with 1 limit switch</b>	<b>KFN11015</b>	<b>KFN11060</b>	<b>KFN11960</b>
<b>Codice kit con 2 finecorsа - Code kit with 2 limit switches</b>	<b>KFN12015</b>	<b>KFN12060</b>	<b>KFN12960</b>
A mm.	65	65	75
B mm.	32,5	40	40
C mm.	38	48	48
D mm.	60	70	70

### FINECORSА PNEUMATICO - FP210000 PNEUMATIC LIMIT SWITCH - FP210000

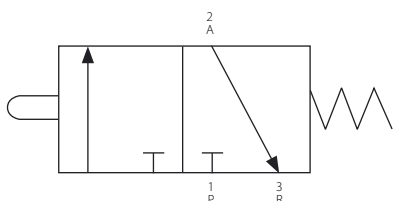


TABELLA CODICI - FINECORSА CODES TABLE - LIMIT SWITCHES

Attuatore Actuator	DAN15÷DAN120 SRN15 ÷ SRN60	DAN180÷DAN480 SRN90÷SRN240	DAN720 ÷ DAN1920 SRN360 ÷ SRN960
<b>Codice Code</b>	<b>FP210000</b>		
Codice fornitore Supplier code	VMW3501000100 - Metal Work		

#### CARATTERISTICHE PRINCIPALI

- Finecorsа pneumatico miniaturizzato con attacchi a cartuccia tubo 4x2
- Temperatura di utilizzo: da +5°C a +70°C
- Pressione max. di esercizio: 10 bar
- Fluido di alimentazione: aria filtrata e lubrificata alla temperatura di 50°C max.
- Portata a 6 bar. con  $\Delta p=1:90$  NI/min
- Diametro di passaggio: 2,2 mm
- Comprensivo di kit per il montaggio sui modelli DAN e SRN composto da una basetta fissata al corpo dell'attuatore e da una camma montata sull'albero dello stesso.

#### TECHNICAL FEATURES

- Miniaturized pneumatic limit switch with cartridge connections pipe 4x2
- Working temperature: from +5°C to +70°C
- Max working pressure: 10 bar
- Operating media: lubricated and filtered air at a temperature of max 50°C.
- Flow at 6 bar. with  $\Delta p=1:90$  NI/min
- Bore: 2,2 mm
- Mounting kit included on DAN and SRN models. It is composed by a plate fixed on the body of the actuator and a cam mounted on its shaft