

3/2 way direct acting solenoid valve, G 1/8" – G 1/4"

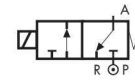
Common features

Body material: stainless steel (1.4305 EN 10088/AISI 303)
 Orifice material: stainless steel (1.4305 EN 10088/AISI 303)
 Operator material: stainless steel
 Protection class: IP 65 (with connector and gasket)

Options

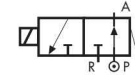
Available with body thread connection 1/8" (e.g. code D398DVC), performance ratings remain the same as D399DVC.
 NPT connection on request, minimum batch may be required (e.g. code RD399CVGN)

TYPE: D398/399



Normally Closed

TYPE: RD398/399



Normally Open



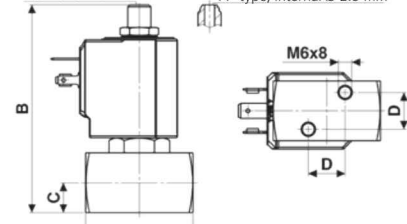
| Dimensions & weights | | D398 | D399 |
|----------------------|-----------|------|------|
| G connection | [ISO 228] | 1/8" | 1/4" |
| A | [mm] | 45 | 45 |
| B | [mm] | 87 | 87 |
| C | [mm] | 12.5 | 12.5 |
| D | [mm] | 15.4 | 15.4 |
| weight | [kg] | 0.35 | 0.35 |

General purpose

| Valve | Nominal Ø | Flow rate Kvs | OPD | | | Coils | |
|---------|-----------|---------------|--------|---------|---------|-------|---------------------------|
| | | | min. | max. AC | max. DC | code | [Volts/Hz] |
| code | [mm] | [l/min] | [barg] | [barg] | [barg] | | |
| D399CVC | 1.5 | 1.3 | 0 | 18 | 18 | 7250 | 24 VDC |
| D399CVE | 2.0 | 2.2 | 0 | 10 | 10 | 7200 | 24 V 50/60 Hz |
| D399CVG | 2.5 | 3.4 | 0 | 7 | 7 | 7400 | 110 V 50 Hz - 120 V 60 Hz |
| D399CVH | 3.0 | 4.5 | 0 | 5 | 5 | 7600 | 200 V 50 Hz - 220 V 60 Hz |
| | | | | | | 7700 | 230 V 50 Hz - 240 V 60 Hz |

1/8" G connection "C" type, internal Ø 2.5 mm

Spherical 1/8" G connection "A" type, internal Ø 2.5 mm



Flow direction underseat 2 → 1

D398/399 - FKM seal, NC -

Media: water, oil, air and aggressive fluids
 Media temperature: -10 to +130 °C
 Ambient temperature: -10 to +50 °C
 Seal material: foodgrade FKM
 Coil power: AC 18 VA (holding)
 AC 36 VA (inrush)
 DC 14 W

Options

Armature tube with spherical 1/8" G connection (e.g. code D398AVC)
 Silver shading ring (e.g. code D398CVGA)
 UL approved coils (e.g. code 770R)

Steam

| Valve | Nominal Ø | Flow rate Kvs | OPD | | | Coils class 'H' only | |
|---------|-----------|---------------|--------|---------|---------|----------------------|---------------------------|
| | | | min. | max. AC | max. DC | code | [Volts/Hz] |
| code | [mm] | [l/min] | [barg] | [barg] | [barg] | | |
| D399CLC | 1.5 | 1.3 | 0 | 9 | 9 | 7251 | 24 VDC |
| D399CLE | 2.0 | 2.2 | 0 | 9 | 9 | 7201 | 24 V 50/60 Hz |
| D399CLH | 3.0 | 4.5 | 0 | 5 | 5 | 7401 | 110 V 50 Hz - 120 V 60 Hz |
| | | | | | | 7601 | 200 V 50 Hz - 220 V 60 Hz |
| | | | | | | 7701 | 230 V 50 Hz - 240 V 60 Hz |

D398/399 - Sigodur seal, NC -

Media: steam
 Media temperature: -10 to +180 °C
 Ambient temperature: -10 to +70 °C
 Seal material: Sigodur (filled PTFE)
 Coil power: AC 18 VA (holding)
 AC 36 VA (inrush)
 DC 14 W

Options

Silver shading ring (e.g. code D398CLCA)

Notes

Seamless tube as standard

General purpose

| Valve | Nominal Ø | Flow rate Kvs | OPD | | | Coils class 'H' only | |
|----------|-----------|---------------|--------|---------|---------|----------------------|---------------------------|
| | | | min. | max. AC | max. DC | code | [Volts/Hz] |
| code | [mm] | [l/min] | [barg] | [barg] | [barg] | | |
| RD399CVC | 1.5 | 1.3 | 0 | 15 | 15 | 7251 | 24 VDC |
| RD399CVE | 2.0 | 2.2 | 0 | 10 | 10 | 7201 | 24 V 50/60 Hz |
| RD399CVH | 3.0 | 4.5 | 0 | 4 | 4 | 7401 | 110 V 50 Hz - 120 V 60 Hz |
| | | | | | | 7601 | 200 V 50 Hz - 220 V 60 Hz |
| | | | | | | 7701 | 230 V 50 Hz - 240 V 60 Hz |

RD398/399 - FKM seal, NO -

Media: water, oil, air and aggressive fluids
 Media temperature: -10 to +130 °C
 Ambient temperature: -10 to +50 °C
 Seal material: foodgrade FKM
 Coil power: AC 18 VA (holding)
 AC 36 VA (inrush)
 DC 14 W

Notes

Protective treatment of operators is recommended, minimum batch may be required.