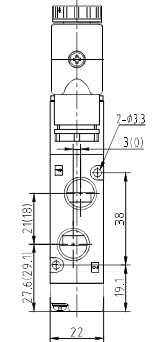
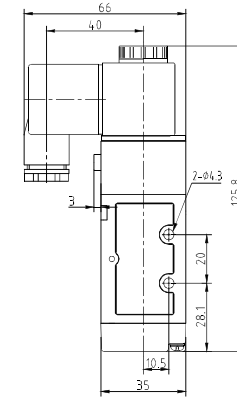
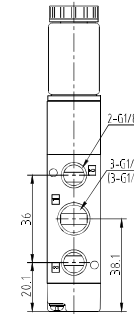
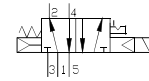


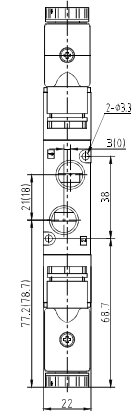
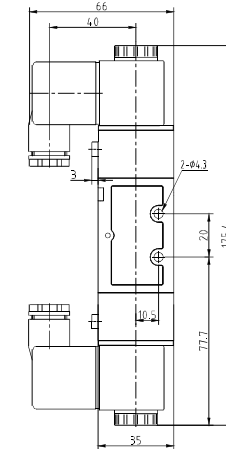
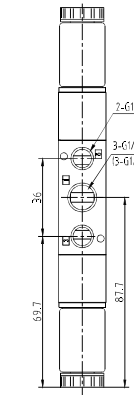
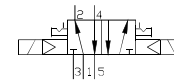
4V2 系列二位五通电磁阀 4V2 Series 5/2 Way Solenoid Valve

外形与安装尺寸/ Dimensions

4V210-08(06)



4V220-08(06)



4V2



4V1

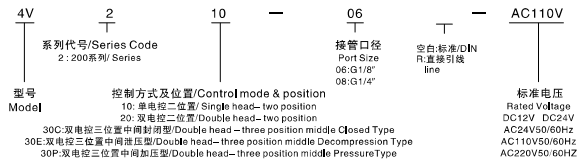


4V210系列
4V210 series



4V220系列
4V220 series

型号命名/ Product Code System



举例/ Example

▲欲订购接管口径为G1/8", 标准电压为AC 110V(50/60Hz)的双电控三位置中间封闭型 4V2系列电磁阀, 其正确的订购代码为: 4V230C-06-D-AC110

▲For the order of twin head - three position closed type 4V2 series solenoid valve which port size is 1/8" and rated voltage is AC 110V(50/60Hz), the correct order code is: 4V230C-06-D-AC110

技术参数/ Specification

型号/Model	4V210-06	4V220-06	4V210-08	4V220-08
工作介质/ Fluids	经过滤的压缩空气 / The constrigent after filtered			
动作方式/ Operation	内部先导式/ Inside Pilot Type			
位置数 / Position	二位五通 5/2 Way		二位五通 5/2 Way	
有效截面积/ Efficient Sectional Area	14mm ² (CV=0.78)		18mm ² (CV=0.89)	
接管螺纹/ Port Thread	进气/ Supply=出气/ Export=排气/ Exhaust=G1/8"		进气/ Supply=出气/ Export=G1/4" 排气/ Exhaust=G1/8"	
润滑/ Lubrication	不需要/ Not Required			
使用压力/ Operating Pressure	0.15-0.8MPa			
最大耐压/ Max Pressure	1.2MPa			
工作温度/ Operating Temperature	-5-60°C			
电压范围/ Allowable Voltage	-15%~+10%			
功率/ Power Consumption	AC:4.5VA DC:3W			
绝缘性/ Coil Insulation	F级/ Class F			
保护等级/ Protection Grade	IP65(DIN40050)			
接电型式/ Connection	端子式/ Terminal Type			
最高动作频率/ Max Frequency	每秒五次/ 5 Times Per Second			
最短响应时间/ Min Response Time	0.05秒/ 0.05 Seconds			
寿命/Life	800万次/ 8 Million			