

# valvole Namur

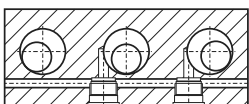
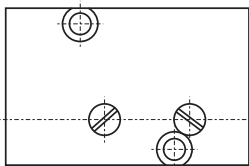
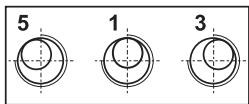
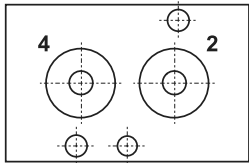
Namur valves



La funzione della valvola può essere variata in qualsiasi momento, secondo lo schema qui riportato, cambiando di posto la guarnizione collocata sotto a uno dei due tappi avvitati nel corpo.  
 The function of the valve can be changed by repositioning the seal situated under one of the two plugs.



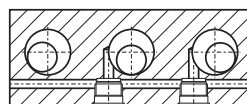
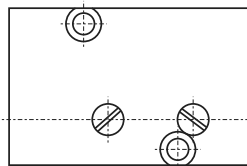
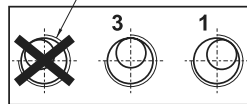
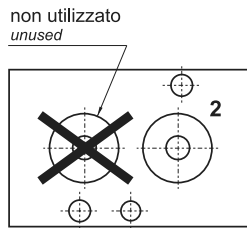
## 5 VIE - 5 WAYS



tappo senza guarnizione  
plug without seal

tappo con guarnizione  
plug with seal

## 3 VIE - 3 WAYS



tappo con guarnizione  
plug with seal

tappo senza guarnizione  
plug without seal

### Materiali

**Corpo:** alluminio 11S

**Comando e fondello:** tecnopolimero (\*)

**Molle:** INOX

**Guarnizioni:** NBR

**Spola:** alluminio nichelato

**Parti interne:** ottone OT58

### Materials

**Body:** aluminium 11S

**End caps:** technopolymer (\*)

**Springs:** stainless steel

**Seals:** NBR

**Spool:** nickel plated aluminium

**Internal parts:** brass OT58

(\*) Su richiesta e dietro supplemento di prezzo, le valvole sono fornibili con corpo, comando e fondello interamente in alluminio. Alcune valvole, come di seguito specificato, sono disponibili solo nella versione in alluminio. Le valvole ATEX sono solo in alluminio.

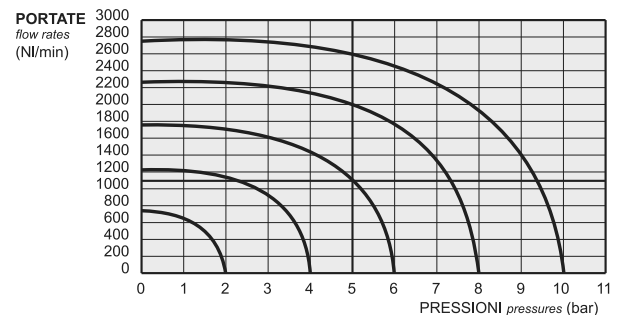
Le parti in tecnopolimero recano impresso il logo

(\*) On request and upon extra charge, the valves are available also with body and end caps entirely in aluminium. Some valves, as specified in the next pages, are available only in the aluminium version. ATEX valves are only in aluminium.

The parts in technopolymer are marked with the logo

I prodotti di seguito indicati sono venduti senza bobine, da acquistarsi separatamente (vedi pag. 322-323).

The following listed products are sold without coils, which are bought separately (refer to pages 322-323).



### Kit ricambi - spare parts

**01.065.2 :** per valvole [for valves] 382 MC, 382 ME, 582 MC, 582 ME

**01.066.2 :** per valvole [for valves] 382 CC, 382 EE, 582 CC, 582 EE

Diametro nominale Nominal orifice		7.5 mm		
Attacchi Ports		G1/4"		
Temperatura di esercizio Temperature range		max +60°C		
Pressione di esercizio Working pressure	el. monost. [electr. monost.]	el. bistabile [electr. bi-stable]	pn. monost. [pneum. monost.]	pn. bistabile [pneum. bist.]
	2.5 ... 10 bar 0.25 ... 1 MPa	1 ... 10 bar 0.1 ... 1 MPa	0 ... 10 bar 0 ... 1 MPa	0 ... 10 bar 0 ... 1 MPa
Pressione di azionamento Actuating pressure			pn. monost. [pneum. monost.]	pn. bistabile [pneum. bist.]
			2.5 ... 10 bar 0.25 ... 1 MPa	1 ... 10 bar 0.1 ... 1 MPa
Fluido Fluid	Aria filtrata 50µ con o senza lubrificazione 50µ filtered, lubricated or non lubricated air			

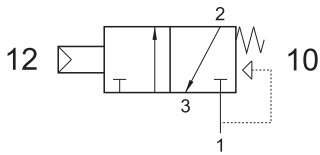
# valvole Namur

Namur valves



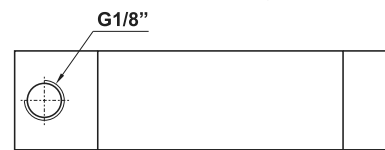
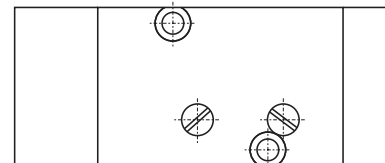
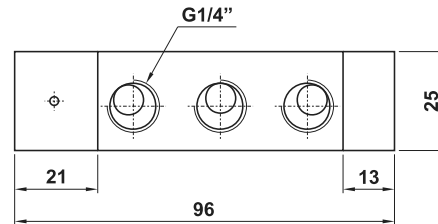
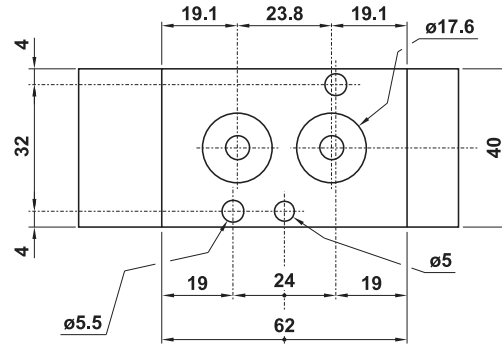
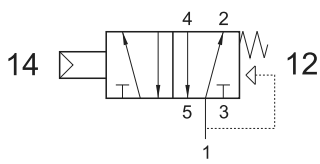
## 382 MC

3/2 NC comando pneumatico - ritorno a molla  
3/2 NC pneumatic pilot - spring return



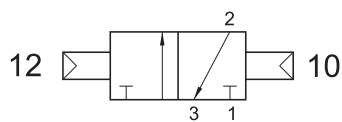
## 582 MC

5/2 comando pneumatico - ritorno a molla  
5/2 pneumatic pilot - spring return



## 382 CC

3/2 doppio comando pneumatico  
3/2 double pneumatic pilot



## 582 CC

5/2 doppio comando pneumatico  
5/2 double pneumatic pilot

