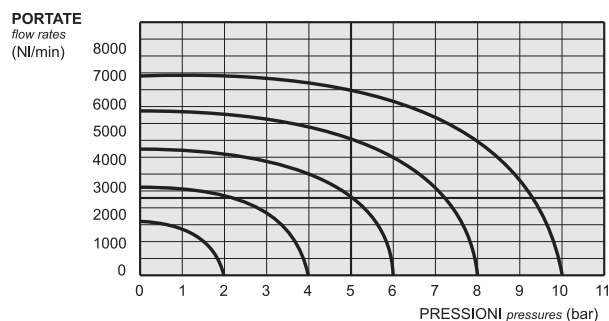
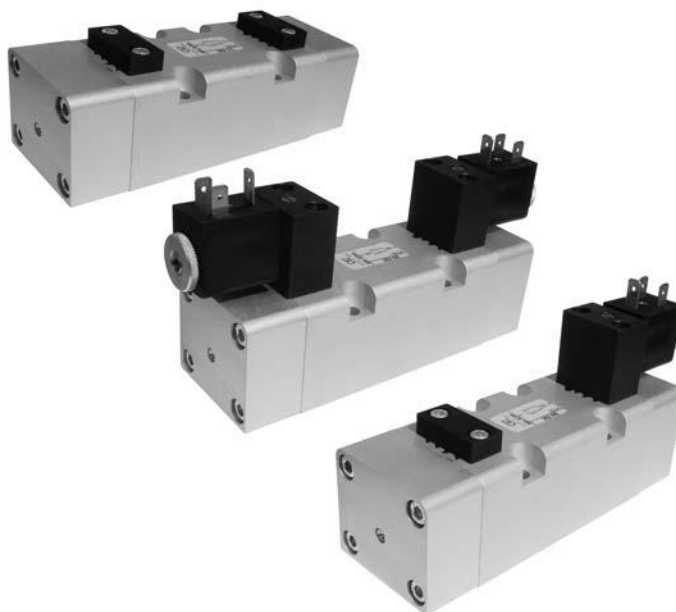


valvole ISO 5599/1 taglia 2

ISO 5599/1 valves - size 2



- Valvole a spola 5/2-5/3
5/2-5/3 spool valves
- Montaggio su basi modulari
Installation on multiple sub-bases
- Azionatore manuale bistabile sull'elettropilota
Detented manual override on the solenoid pilot
- Riarmo manuale della valvola
Manual reset



I prodotti di seguito indicati sono venduti senza bobine, da acquistarsi separatamente (vedi pag. 357-358).
The following listed products are sold without coils, which are bought separately (refer to pages 357-358).

Tempi di risposta - response times

| | az. pneumatico <i>pneumatic pilot</i> | az. elettrico <i>solenoid pilot</i> |
|-----------------------------------|--|--|
| monostabile <i>mono-stable</i> | TRA (14): 24 ms TRR (12): 43 ms | TRA (14): 39 ms TRR (12): 60 ms |
| bistabile <i>bi-stable</i> | TRA (14): 30 ms TRR (12): 30 ms | TRA (14): 90 ms TRR (12): 90 ms |

Materiali

Corpo: alluminio 11S
Molle: INOX
Guarnizioni: NBR
Spola: alluminio nichelato
Parti interne: ottone OT58

Materials

Body: aluminium 11S
Springs: stainless steel
Seals: NBR
Spool: nickel plated aluminium
Internal parts: brass OT58

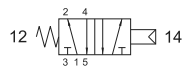
| | | | |
|--|--|---|--------------------------------------|
| Diametro nominale <i>Nominal orifice</i> | 9 mm | | |
| Temperatura di esercizio <i>Temperature range</i> | max +60°C | | |
| Pressione di esercizio <i>Working pressure</i> | al. interna monost. [monost. internal air supply] | al. interna bist. [bi-stable internal air supply] | alim. separata [separate air supply] |
| | 2.5 ... 10 bar 0.25 ... 1 MPa | 1 ... 10 bar 0.1 ... 1 MPa | -0.9 ... 10 bar -0.09 ... 1 MPa |
| Pressione di azionamento (per alimentazione separata) <i>Actuating pressure (for separate air supply)</i> | monostabile [mono-stable] | | bistabile [bi-stable] |
| | 2.5 ... 10 bar 0.25 ... 1 MPa | | 1 ... 10 bar 0.1 ... 1 MPa |
| Fluido <i>Fluid</i> | Aria filtrata 50µ con o senza lubrificazione 50µ filtered, lubricated or non lubricated air | | |

valvole ISO 5599/1 taglia 2

ISO 5599/1 valves - size 2

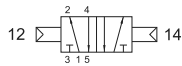


252 MC



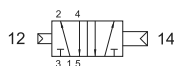
5/2 comando pneumatico - ritorno a molla
5/2 pneumatic pilot - spring return

252 CC



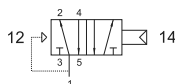
5/2 doppio comando pneumatico
5/2 double pneumatic pilot

252 CCD



5/2 doppio comando pneumatico - con differenziale
5/2 double pneumatic pilot - with differential

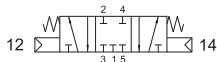
252 CFP



5/2 comando pneumatico - ritorno a molla pneumatica
5/2 pneumatic pilot - pneumatic spring return

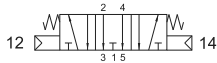
253C CC

centri chiusi
closed centres



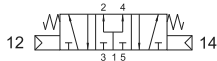
253A CC

centri aperti
open centres



253P CC

centri in pressione
pressurized centres



5/3 doppio comando pneumatico
5/3 double pneumatic pilot

