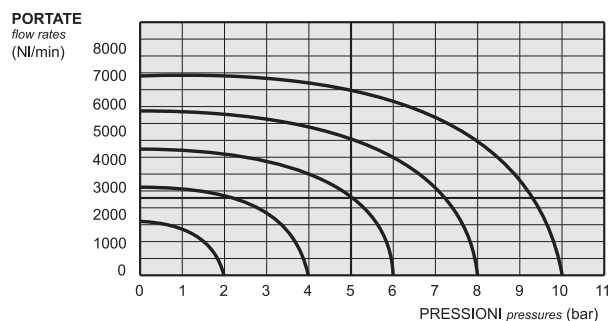
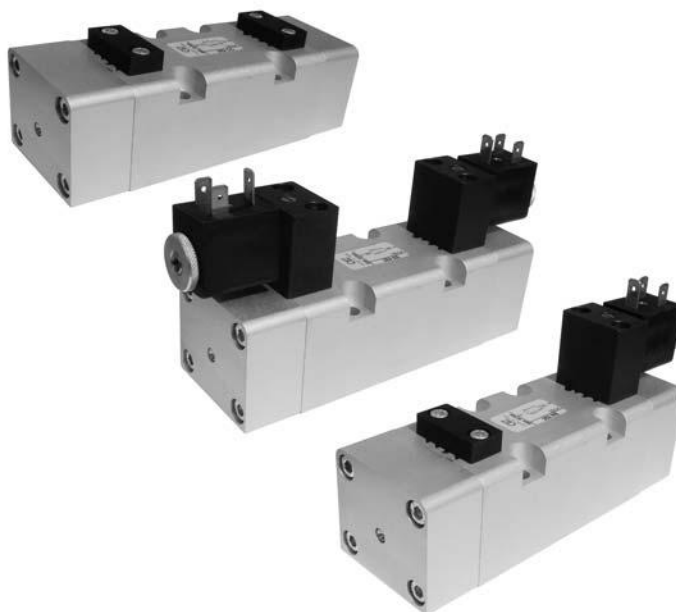


# valvole ISO 5599/1 taglia 2

ISO 5599/1 valves - size 2



- Valvole a spola 5/2-5/3  
*5/2-5/3 spool valves*
- Montaggio su basi modulari  
*Installation on multiple sub-bases*
- Azionatore manuale bistabile sull'elettropilota  
*Detented manual override on the solenoid pilot*
- Riarmo manuale della valvola  
*Manual reset*



I prodotti di seguito indicati sono venduti senza bobine, da acquistarsi separatamente (vedi pag. 357-358).  
The following listed products are sold without coils, which are bought separately (refer to pages 357-358).

## Tempi di risposta - response times

	az. pneumatico <i>pneumatic pilot</i>	az. elettrico <i>solenoid pilot</i>
monostabile <i>mono-stable</i>	TRA (14): 24 ms TRR (12): 43 ms	TRA (14): 39 ms TRR (12): 60 ms
bistabile <i>bi-stable</i>	TRA (14): 30 ms TRR (12): 30 ms	TRA (14): 90 ms TRR (12): 90 ms

## Materiali

**Corpo:** alluminio 11S  
**Molle:** INOX  
**Guarnizioni:** NBR  
**Spola:** alluminio nichelato  
**Parti interne:** ottone OT58

## Materials

**Body:** aluminium 11S  
**Springs:** stainless steel  
**Seals:** NBR  
**Spool:** nickel plated aluminium  
**Internal parts:** brass OT58

Diametro nominale <i>Nominal orifice</i>	9 mm		
Temperatura di esercizio <i>Temperature range</i>	max +60°C		
Pressione di esercizio <i>Working pressure</i>	al. interna monost. [monost. internal air supply]	al. interna bist. [bi-stable internal air supply]	alim. separata [separate air supply]
	2.5 ... 10 bar 0.25 ... 1 MPa	1 ... 10 bar 0.1 ... 1 MPa	-0.9 ... 10 bar -0.09 ... 1 MPa
Pressione di azionamento (per alimentazione separata) <i>Actuating pressure (for separate air supply)</i>	monostabile [mono-stable]		bistabile [bi-stable]
	2.5 ... 10 bar 0.25 ... 1 MPa		1 ... 10 bar 0.1 ... 1 MPa
Fluido <i>Fluid</i>	Aria filtrata 50µ con o senza lubrificazione 50µ filtered, lubricated or non lubricated air		

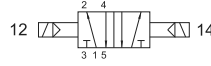
# valvole ISO 5599/1 taglia 2

ISO 5599/1 valves - size 2



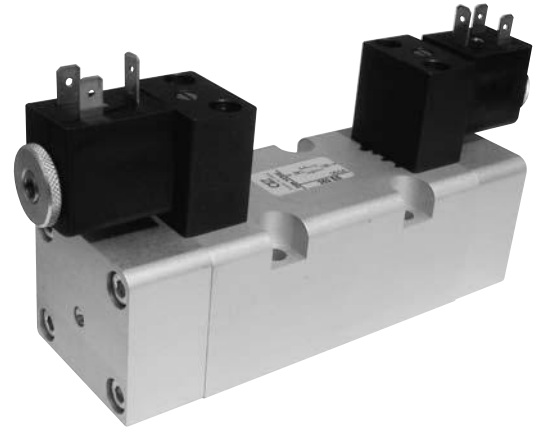
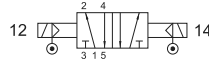
## 252 EE

5/2 doppio comando elettrico  
5/2 double solenoid pilot



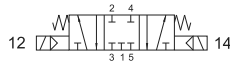
## 252 EE AS

5/2 doppio comando elettrico alimentazione separata  
5/2 double solenoid pilot with separate air supply



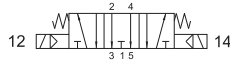
## 253C EE

centri chiusi  
closed centres



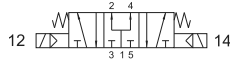
## 253A EE

centri aperti  
open centres



## 253P EE

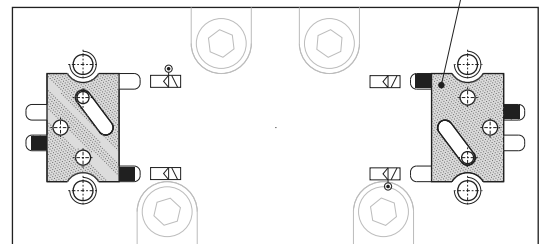
centri in pressione  
pressurized centres



5/3 doppio comando elettrico  
5/3 double solenoid pilot

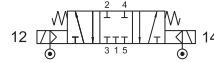
Per cambiare il tipo di alimentazione dell'elettropilota (alimentazione interna o separata) si deve riposizionare la guarnizione in modo che l'estremità evidenziata in nero sia collocata nella posizione corrispondente al simbolo della funzione desiderata.

To change between internal and external air supply it is necessary to align the seal end marked in black with the correct symbol.



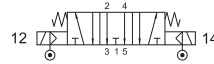
## 253C EE AS

centri chiusi  
closed centres



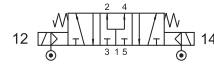
## 253A EE AS

centri aperti  
open centres



## 253P EE AS

centri in pressione  
pressurized centres



5/3 doppio comando elettrico alimentazione separata  
5/3 double solenoid pilot with separate air supply

