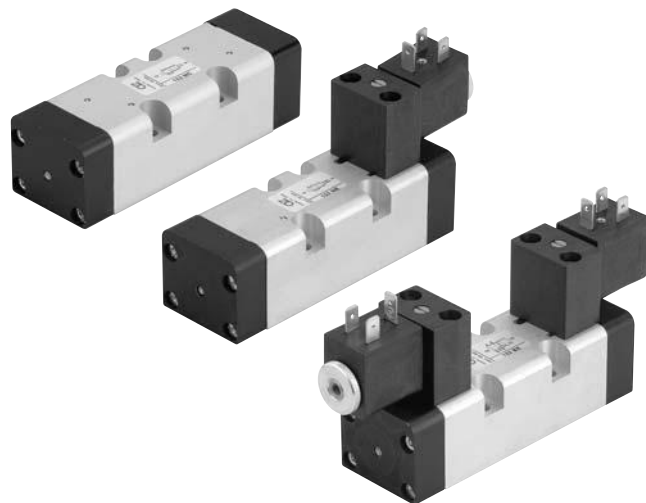


valvole ISO 5599/1 taglia 1

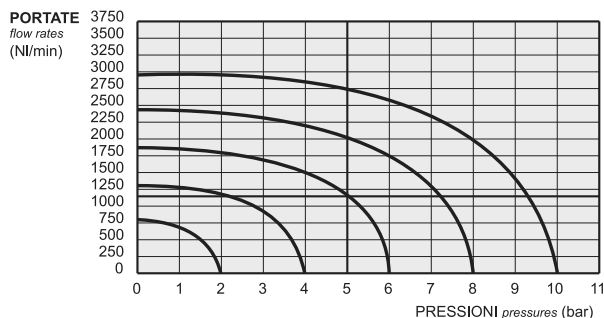
ISO 5599/1 valves - size 1



- Valvole a spola 5/2-5/3
5/2-5/3 spool valves
- Montaggio su basi modulari o a posti fissi
Installation on manifolds or multiple sub-bases
- Azionatore manuale bistabile sull'elettropilota
Detented manual override on the solenoid pilot
- Riarmo manuale della valvola
Manual reset



2



I prodotti di seguito indicati sono venduti senza bobine, da acquistarsi separatamente (vedi pag. 357-358).
The following listed products are sold without coils, which are bought separately (refer to pages 357-358).

Tempi di risposta - response times

	az. pneumatico <i>pneumatic pilot</i>	az. elettrico <i>solenoid pilot</i>
monostabile <i>mono-stable</i>	TRA (14): 12 ms TRR (12): 30 ms	TRA (14): 24 ms TRR (12): 50 ms
bistabile <i>bi-stable</i>	TRA (14): 20 ms TRR (12): 20 ms	TRA (14): 80 ms TRR (12): 80 ms

Materiali

Corpo: alluminio 11S
Fondelli: tecnopolimero
Molle: INOX
Guarnizioni: NBR
Spola: alluminio nichelato
Parti interne: ottone OT58

Materials

Body: aluminium 11S
End caps: technopolymer
Springs: stainless steel
Seals: NBR
Spool: nickel plated aluminium
Internal parts: brass OT58

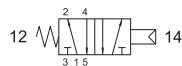
Diametro nominale <i>Nominal orifice</i>	7.5 mm		
Temperatura di esercizio <i>Temperature range</i>	max +60°C		
Pressione di esercizio <i>Working pressure</i>	al. interna monost. [monost. internal air supply]	al. interna bist. [bi-stable internal air supply]	alim. separata [separate air supply]
	2.5 ... 10 bar 0.25 ... 1 MPa	1 ... 10 bar 0.1 ... 1 MPa	-0.9 ... 10 bar -0.09 ... 1 MPa
Pressione di azionamento (per alimentazione separata) <i>Actuating pressure (for separate air supply)</i>	monostabile [mono-stable]		bistabile [bi-stable]
	2.5 ... 10 bar 0.25 ... 1 MPa		1 ... 10 bar 0.1 ... 1 MPa
Fluido <i>Fluid</i>	Aria filtrata 50µ con o senza lubrificazione <i>50µ filtered, lubricated or non lubricated air</i>		

valvole ISO 5599/1 taglia 1

ISO 5599/1 valves - size 1

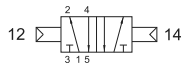


152 MC



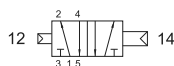
5/2 comando pneumatico - ritorno a molla
5/2 pneumatic pilot - spring return

152 CC



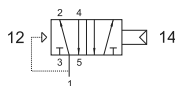
5/2 doppio comando pneumatico
5/2 double pneumatic pilot

152 CCD



5/2 doppio comando pneumatico - con differenziale
5/2 double pneumatic pilot - with differential

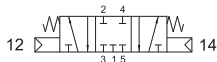
152 CFP



5/2 comando pneumatico - ritorno a molla pneumatica
5/2 pneumatic pilot - pneumatic spring return

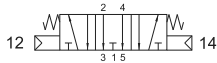
153C CC

centri chiusi
closed centres



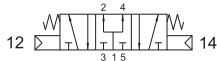
153A CC

centri aperti
open centres



153P CC

centri in pressione
pressurized centres



5/3 doppio comando pneumatico
5/3 double pneumatic pilot

