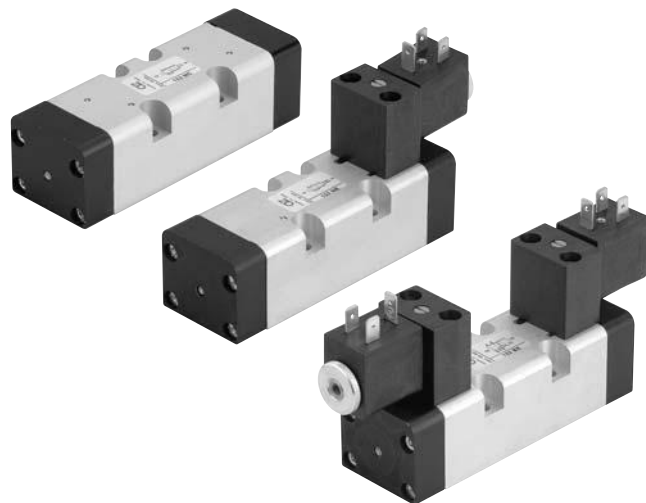


valvole ISO 5599/1 taglia 1

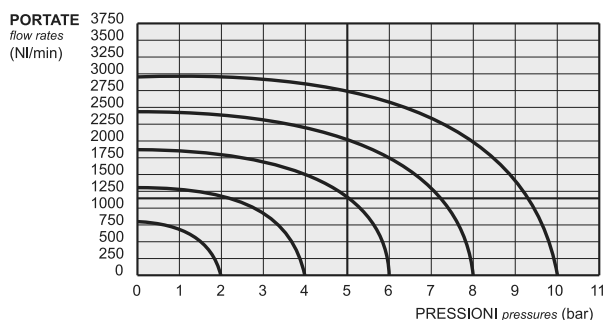
ISO 5599/1 valves - size 1



- Valvole a spola 5/2-5/3
5/2-5/3 spool valves
- Montaggio su basi modulari o a posti fissi
Installation on manifolds or multiple sub-bases
- Azionatore manuale bistabile sull'elettropilota
Detented manual override on the solenoid pilot
- Riarmo manuale della valvola
Manual reset



2



I prodotti di seguito indicati sono venduti senza bobine, da acquistarsi separatamente (vedi pag. 357-358).
The following listed products are sold without coils, which are bought separately (refer to pages 357-358).

Tempi di risposta - response times

	az. pneumatico <i>pneumatic pilot</i>	az. elettrico <i>solenoid pilot</i>
monostabile <i>mono-stable</i>	TRA (14): 12 ms TRR (12): 30 ms	TRA (14): 24 ms TRR (12): 50 ms
bistabile <i>bi-stable</i>	TRA (14): 20 ms TRR (12): 20 ms	TRA (14): 80 ms TRR (12): 80 ms

Materiali

Corpo: alluminio 11S
Fondelli: tecnopolimero
Molle: INOX
Guarnizioni: NBR
Spola: alluminio nichelato
Parti interne: ottone OT58

Materials

Body: aluminium 11S
End caps: technopolymer
Springs: stainless steel
Seals: NBR
Spool: nickel plated aluminium
Internal parts: brass OT58

Diametro nominale <i>Nominal orifice</i>	7.5 mm		
Temperatura di esercizio <i>Temperature range</i>	max +60°C		
Pressione di esercizio <i>Working pressure</i>	al. interna monost. [monost. internal air supply]	al. interna bist. [bi-stable internal air supply]	alim. separata [separate air supply]
	2.5 ... 10 bar 0.25 ... 1 MPa	1 ... 10 bar 0.1 ... 1 MPa	-0.9 ... 10 bar -0.09 ... 1 MPa
Pressione di azionamento (per alimentazione separata) <i>Actuating pressure (for separate air supply)</i>	monostabile [mono-stable]		bistabile [bi-stable]
	2.5 ... 10 bar 0.25 ... 1 MPa		1 ... 10 bar 0.1 ... 1 MPa
Fluido <i>Fluid</i>	Aria filtrata 50µ con o senza lubrificazione <i>50µ filtered, lubricated or non lubricated air</i>		

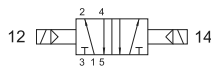
valvole ISO 5599/1 taglia 1

ISO 5599/1 valves - size 1



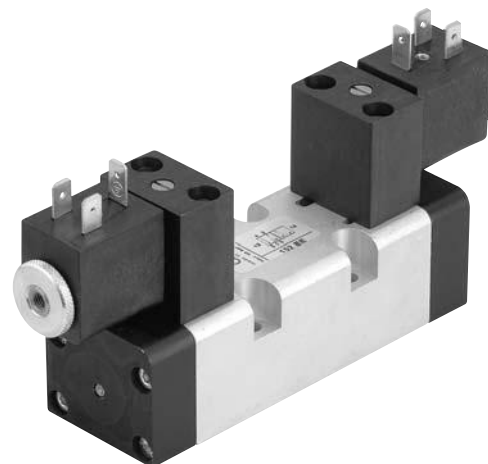
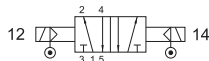
152 EE

5/2 doppio comando elettrico
5/2 double solenoid pilot



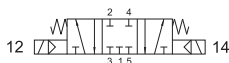
152 EE AS

5/2 doppio comando elettrico alimentazione separata
5/2 double solenoid pilot with separate air supply



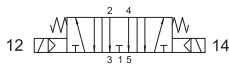
153C EE

centri chiusi
closed centres



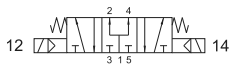
153A EE

centri aperti
open centres



153P EE

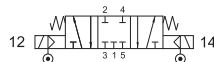
centri in pressione
pressurized centres



5/3 doppio comando elettrico
5/3 double solenoid pilot

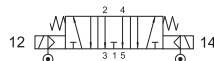
153C EE AS

centri chiusi
closed centres



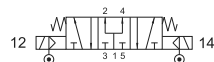
153A EE AS

centri aperti
open centres



153P EE AS

centri in pressione
pressurized centres



5/3 doppio comando elettrico alimentazione separata
5/3 double solenoid pilot with separate air supply

Per cambiare il tipo di alimentazione dell'elettropilota (alimentazione interna o separata) si deve riposizionare la guarnizione in modo che l'estremità evidenziata in nero sia collocata nella posizione corrispondente al simbolo della funzione desiderata.

To change between internal and external air supply it is necessary to align the seal end marked in black with the correct symbol.

