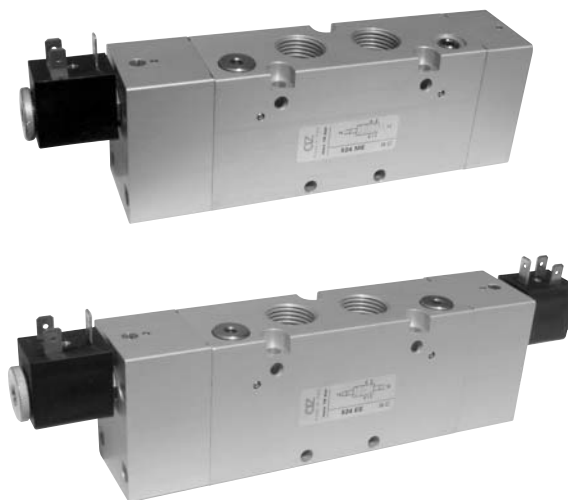


valvole G1/2" azionamento elettropneumatico

solenoid actuated valves - G1/2"



- Valvole a spola 3/2-5/2-5/3 con attacchi filettati G1/2"
3/2-5/2-5/3 spool valves with G1/2" threaded ports
- Elevatissima portata
Very high flow rate
- Montaggio in linea
Installation in-line
- Comandi elettrici con azionamento manuale bistabile
Solenoid pilots with detented manual override as standard
- Multifunzionalità e adattabilità
Multifunction feature



I prodotti di seguito indicati sono venduti senza bobine, da acquistarsi separatamente (vedi pag. 244).

The following listed products are sold without coils, which are bought separately (refer to page 244).

Kit ricambi - spare parts

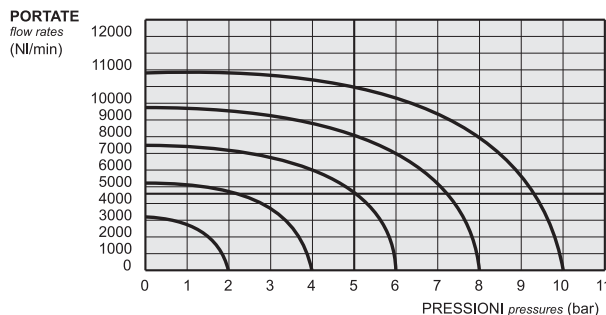
02.030.2 : per valvole a 3/2 vie [for 3/2 way valves] ME - ME AS - MC

02.031.2 : per valvole a 5/2 vie [for 5/2 way valves] ME - ME AS - MC

02.032.2 : per valvole a 3/2 vie [for 3/2 way valves] EE - EE AS - CC

02.033.2 : per valvole a 5/2 vie [for 5/2 way valves] EE - EE AS - CC

02.034.2 : per valvole a 5/3 vie [for 5/3 way valves] EE - EE AS - CC



Tempi di risposta - response times

monostabile <i>mono-stable</i>	TRA (14): 39 ms TRR (12): 60 ms
bistabile <i>bi-stable</i>	TRA (14): 90 ms TRR (12): 90 ms

Materiali

Corpo: alluminio 11S

Molle: INOX

Guarnizioni: NBR

Spola: alluminio nichelato

Parti interne: ottone OT58

Materials

Body: aluminium 11S

Springs: stainless steel

Seals: NBR

Spool: nickel plated aluminium

Internal parts: brass OT58

Diametro nominale <i>Nominal orifice</i>		13 mm	
Portata nominale a 6 bar, Δp 1 bar <i>Nominal flow rate at 6 bar, Δp 1 bar</i>		4600 NI/min	
Temperatura di esercizio <i>Temperature range</i>		max +60°C	
Pressione di esercizio <i>Working pressure</i>	al. interna monost. [monost. internal air supply]	al. interna bist. [bi-stable internal air supply]	alim. separata [separate air supply]
	2.5 ... 10 bar 0.25 ... 1 MPa	1 ... 10 bar 0.1 ... 1 MPa	-0.9 ... 10 bar -0.09 ... 1 MPa
Pressione di azionamento (per alimentazione separata) <i>Actuating pressure (for separate air supply)</i>	monostabile [mono-stable]		bistabile [bi-stable]
	2.5 ... 10 bar 0.25 ... 1 MPa		1 ... 10 bar 0.1 ... 1 MPa
Fluido <i>Fluid</i>	Aria filtrata 50μ con o senza lubrificazione <i>50μ filtered, lubricated or non lubricated air</i>		