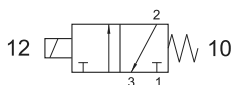


# elettropiloti 10 mm su base multiconnessione

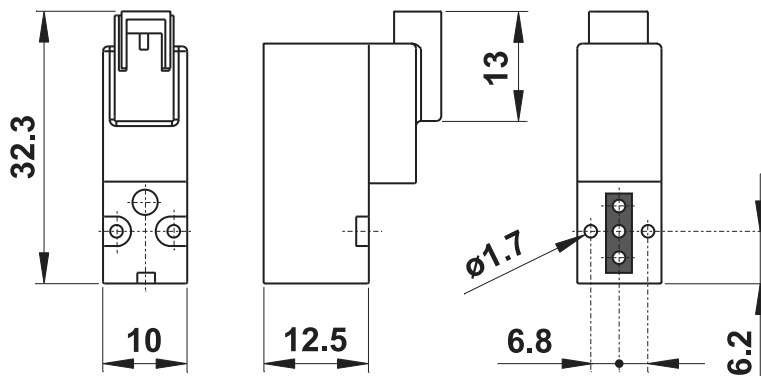
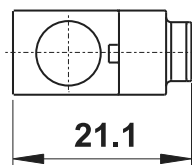
10 mm solenoid valves on manifold with multiconnection D-SUB



Elettropilota  
Solenoid valve **10 mm**



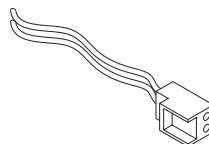
**00.441.0**



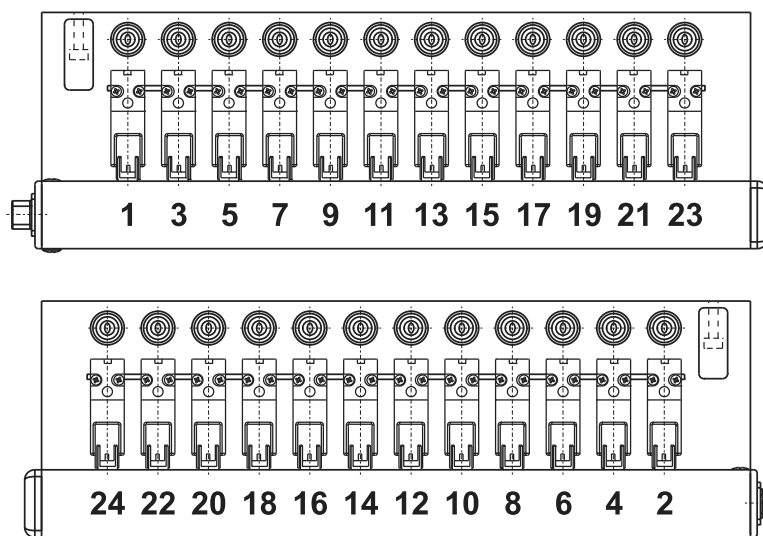
Attenzione: momento massimo di serraggio delle viti di fissaggio degli elettropiloti sulla base: 0.25 Nm  
Attention: maximum torque for mounting screws of the solenoid valves: 0.25 Nm

## ACCESSORI - ACCESSORIES

**07.049.0** Connettore per elettropilota 10 mm con cavetto rosso/nero, lunghezza 400 mm  
Connector for 10 mm solenoid with cable red/black, length 400 mm



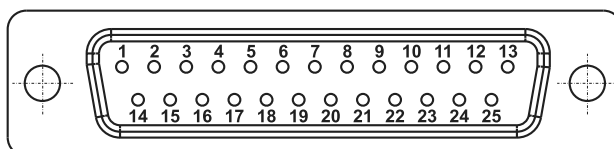
## numerazione elettropiloti valves numbering



## connettore D-SUB (DB-25) connector D-SUB (DB-25)

**1-24** segnali per elettropiloti  
signals for solenoid valves

**25** comune (-)  
common (-)



Tensione <i>Tension</i>	24V DC $\pm 10\%$
Potenza <i>Power</i>	0.5 ... 1 W
Portata nominale a 6 bar, $\Delta p$ 1 bar <i>Nominal flow rate at 6 bar, <math>\Delta p</math> 1 bar</i>	15 NI/min
Temperatura di esercizio <i>Temperature range</i>	-5°C ... +60°C
Pressione di esercizio <i>Working pressure</i>	0 ... 7 bar 0 ... 0.7 MPa
Fluido <i>Fluid</i>	Aria filtrata 5 $\mu$ con o senza lubrificazione 5 $\mu$ filtered, lubricated or non lubricated air