

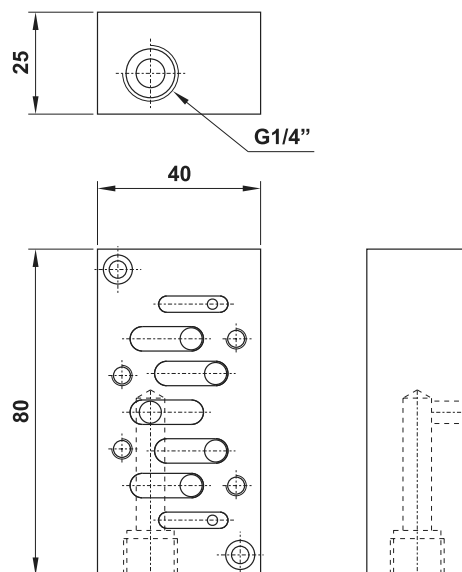
# accessori per basi a posti fissi ISO 1

accessories for manifolds ISO 1



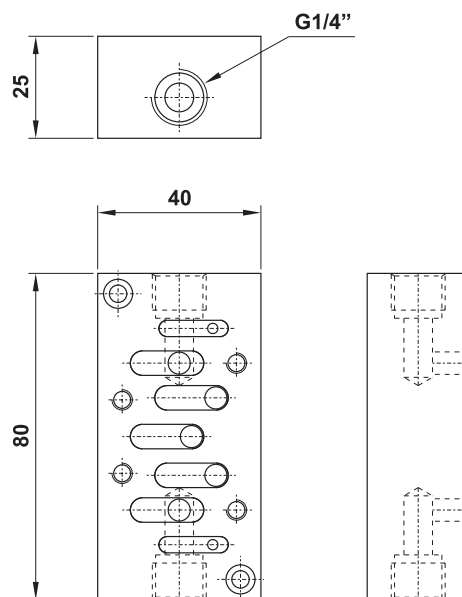
**adattatore per entrata separata**  
*adapting plate for separate air inlet*

**00.085.2**



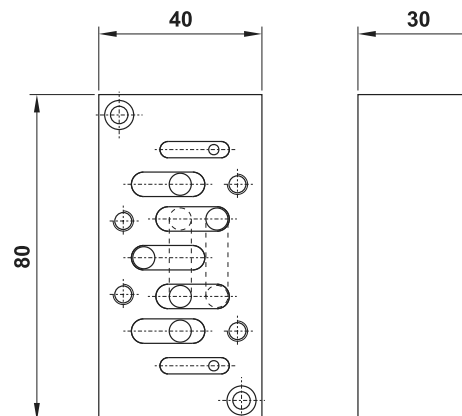
**adattatore per scarichi separati**  
*adapting plate for separate air exhaust*

**00.086.2**



**adattatore per inversione uscite**  
*adapting plate for swapped air outlets*

**00.087.2**



Ogni pezzo è venduto in kit con i particolari necessari al suo assemblaggio.  
*Each element is sold in kit with all necessary pieces for installation.*